



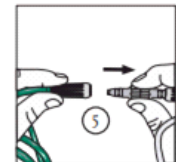
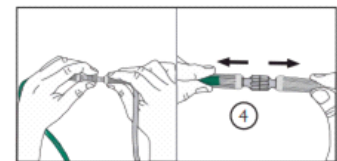
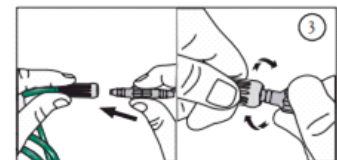
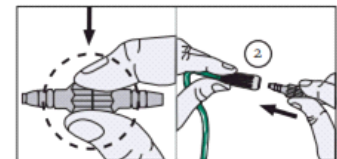
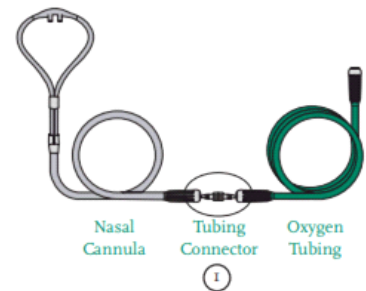
# O2 Tubing Connectors

Salter's tubing connectors promote patient safety and flexibility. Salter's swivel connector is used by millions of patients every year to prevent tubing from twisting in the home. Static connectors and christmas-tree adaptors provide affordable connectors for any configuration. These Salter Swivelling Oxygen Supply Tubing Connectors will connect any two lengths of oxygen tubing with standard 5mm to 7mm end connectors. The swivel action of these connectors helps prevent kinks and snags in tubing as it moves around on floors and bedding.

- Designed to eliminate tangling, twisting and kinking of oxygen tubing
- Leak proof, 360 degree rotating tubing connector
- Prevents oxygen loss

**Product Use:**

- Wash hands. Open package and remove Tubing Connector
- Hold the middle of the Tubing Connector and align the supply tubing end connector.
- Insert, push, and twist the tapered end of the Tubing Connector into oxygen tubing end connector
- Repeat step 3 to attach the other side of the connector to the nasal cannula or oxygen mask tubing
- Gently tug on connection to check for a secure fit
- To remove Swivel Connector, hold the centre of the Tubing Connector, twist and pull on the tubing end connector



1205



1220



1215

Product Code	Description	QTY
1205	O2 Nipple and nut	Box 50
1215	Static oxygen tubing connector, male-male	Box 50
1220	Swivel oxygen tubing connector, male-male	Box 25

